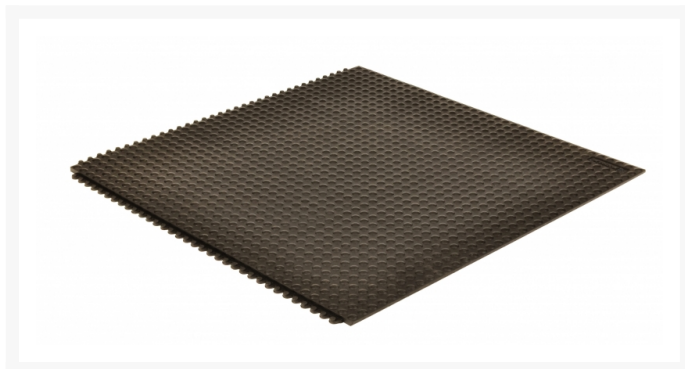
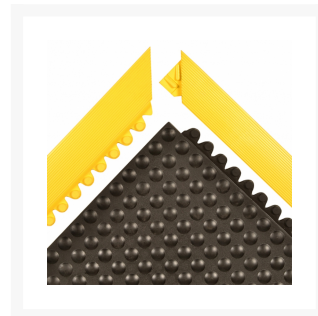
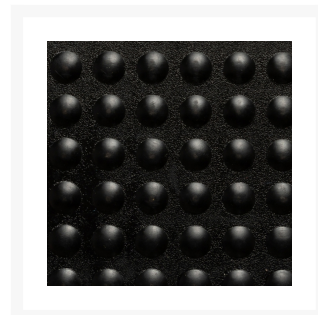
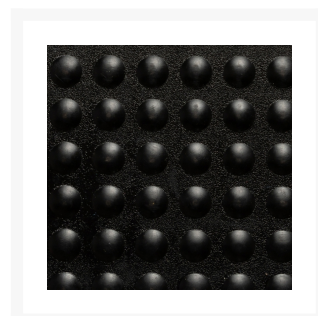
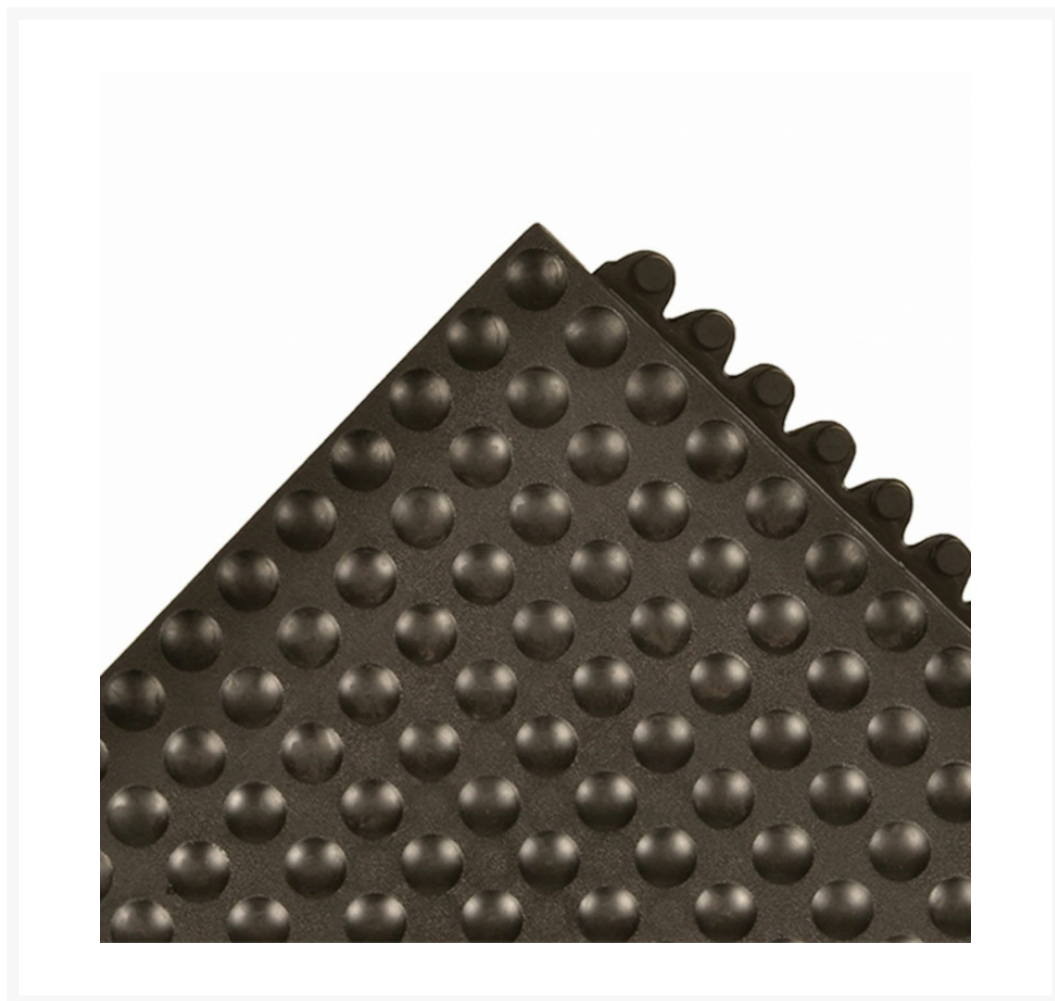
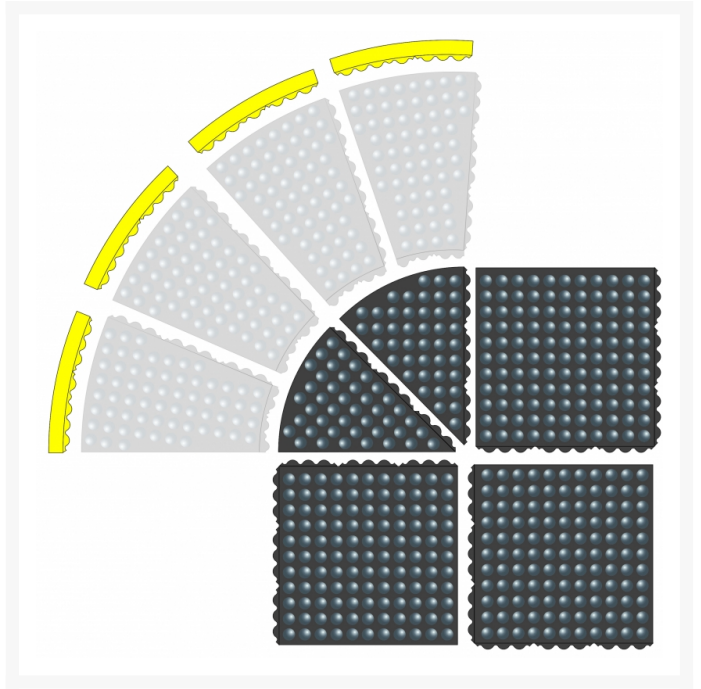
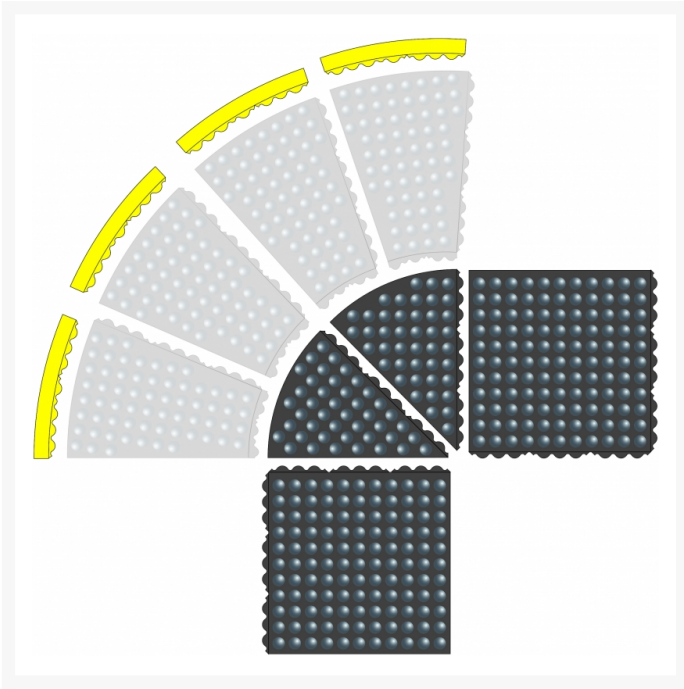
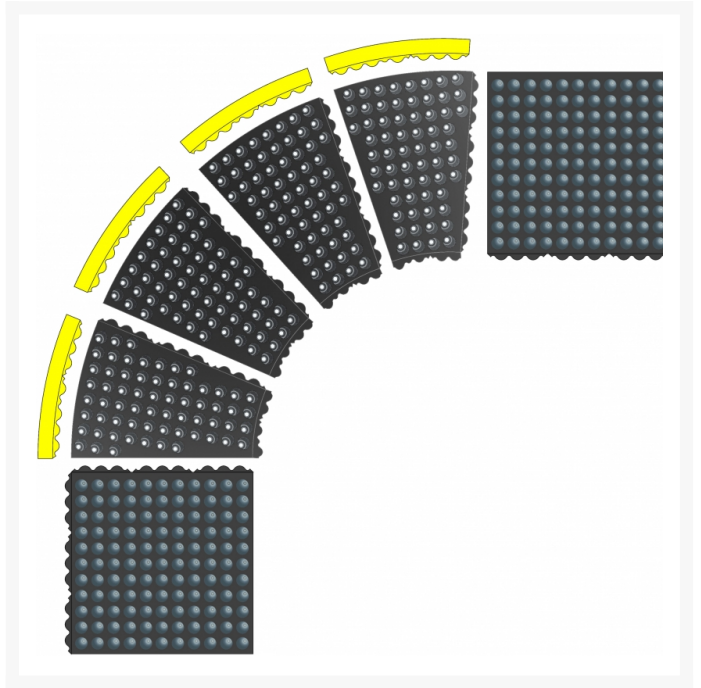
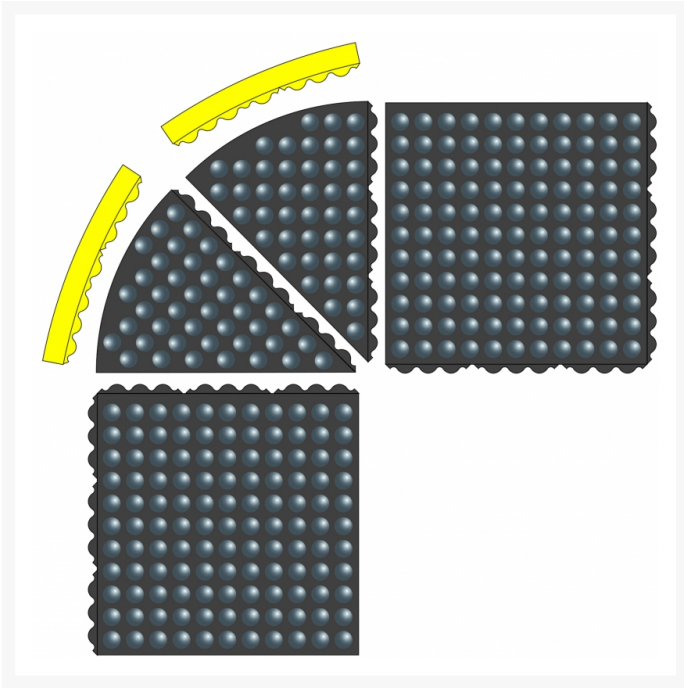




Anti Static Mat Skymaster® HD ESD Interlocking 463

Product Images







Short Description

- Dissipative resilient natural rubber compound and unique support design offers exceptional fatigue relief
- Bubble top surface for added comfort that is easy to clean
- Easy to snap together mats on-site for custom work station platforms
- Meets or exceeds requirements of ANSI/ESD S20.20 and per ANSI/ESD STM7.1
- Resistance Point to Ground (Rtg): 1×10^6 to 1×10^9 ohms
Resistance Point to Point (Rtt): 1×10^6 to 1×10^9 ohms
- Compatible with any of the Skymaster® HD family of mats
#461 Skymaster® HD Ramps and #469 Safety line available
- Optional 051 grounding cord available, not required

Description

Skymaster® HD ESD is an Electro Static Discharge (ESD) protective mat that is formulated to drain static electricity from workers to safeguard against static shocks and protect equipment. Skymaster® HD ESD is heavy duty natural rubber compound mat for industrial strength applications. Snap together tiles of 3'x3' can be easily assembled for coverage of large areas or individual workstations. Ergonomic benefit derived from a 5/8" thick worker platform with a bubble pattern for maximum fatigue relief in dry industrial environments. The unique design and craftsmanship make the mat easy to handle and easy to install on site. A tooled grid of 12"x12" sections on the underside of the mat makes further customization quick and easy. Available beveled edges prevent tripping and allow inside and outside corners. Range of accessories including Skymaster® HD Yellow Safety line™ and Skymaster® HD i-Curve™ and Skymaster® HD o-Curve™ series.

Specifications

Model No	463S0033BL
Color	Black
Dimensions	3'x 3'
UPC	662641848092
Available Colors	Black
Overall Thickness	5/8
Standard sizes	3'x3'
Group	Ergonomic, Anti-fatigue & Safety Matting
Environment	Dry Areas
Special Characteristics	Free of DOP, free of DMF, free of ozone depleting substances, free of silicone and free of heavy metals Static dissipative natural rubber compound
Recommended Use	For placement in ESD assembly lines, picking, packing and logistics warehouses, individual work stations.
Special Remarks	Heavy duty ESD rubber compound that can be used with all Skymaster® HD series of products. Use Skymaster® HD i-Curve™ and Skymaster® HD o-Curve™ to continue around curved workstations
Surface	Industrial Bubble Pattern
Edges	Attachable beveled edges are available
Usage Intensity	Heavy duty
Material Specifications	Static dissipative natural rubber
Process	Compression Molding
Pallet Quantity	36
Weight Lbs/sqft	2.6
Fire Rating US	Pass
REACH Compliant	Reach compliant (Registration, Evaluation, Authorization and Restriction of Chemicals).
Anti-Fatigue Rating	Best

Slip Resistance Rating

Best

Wear Resistance Rating

Best